

SI-810PR

Barcode Label printing Scale

Essae[®]
...for Excellence



Pole type



Bench type

A new generation Barcode Label printing Scale solution to speed up your Weighing & Labelling operations and delight your customers with a more accurate and faster checkout experience.



Grocery



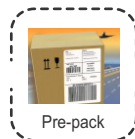
Fruit/Vegetable



Bakery/Sweet



Meat/Poultry



Pre-pack



Technical Specifications

Description	Barcode Label Printing Scale	
Capacity/Accuracy	Bench Type	With Pole
	1kg/0.1g 6kg/1g, 15kg/2g, 30kg/5g.	6kg/1g, 15kg/2g, 30kg/5g.
Platter Size	227mm x 302mm (for 1kg) 280mm x 340mm (for 6kg, 15kg, 30kg.)	280mm x 340mm
Label Width and Length (min~max)	20~62mm, 20~110mm	
Label Thickness (max)	170 microns	
PLU	5000	
Printing speed	0.83 ms/line	
Label Roll Diameter (max)	Outer: 120 mm, Inner: 28 mm	
Standard Interfaces	1 x RS-232 Serial, 1 x Ethernet LAN	
Dimension (L x W x D)	490 mm x 360 mm x 450 mm	

Sailent Features

- Bright LCD Display with green LED back light
- High contrast display for easy viewing in any lighting conditions
- Simple & User friendly design
- Quick changeover of label roll reduces customer waiting time
- Less wastage of labels during calibration
- Sensor for Door & Thermal head open prevents dust entry
- Peel off sensor
- PLU upload/download
- Cloning function reduces downtime
- User friendly label designer
- Flexible Barcode programming
- Long Life & High Reliability
- Better Key click feeling
- Less user fatigue



Graphic Display



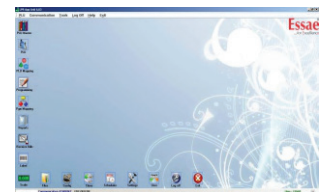
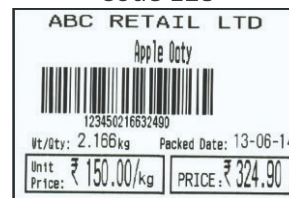
Label Printer

Barcode formats

EAN 13



Code 128



PC Application



Mechanical keyboard

Authorized Partner...

Limra Instruments

📍 G-8, Ground Floor Top Class Enclave CHS. Ltd.,
Opp Zudio Showroom, Bhoidapada, Sativali Road,
Vasai East, Dist. Palghar-401208, Maharashtra.

✉ info@limrainstruments.com,
sales@limrainstruments.com,

🌐 www.limrainstruments.com



Scan For Website

☎ Customer Care - 7666114785

Your Limra Representative

